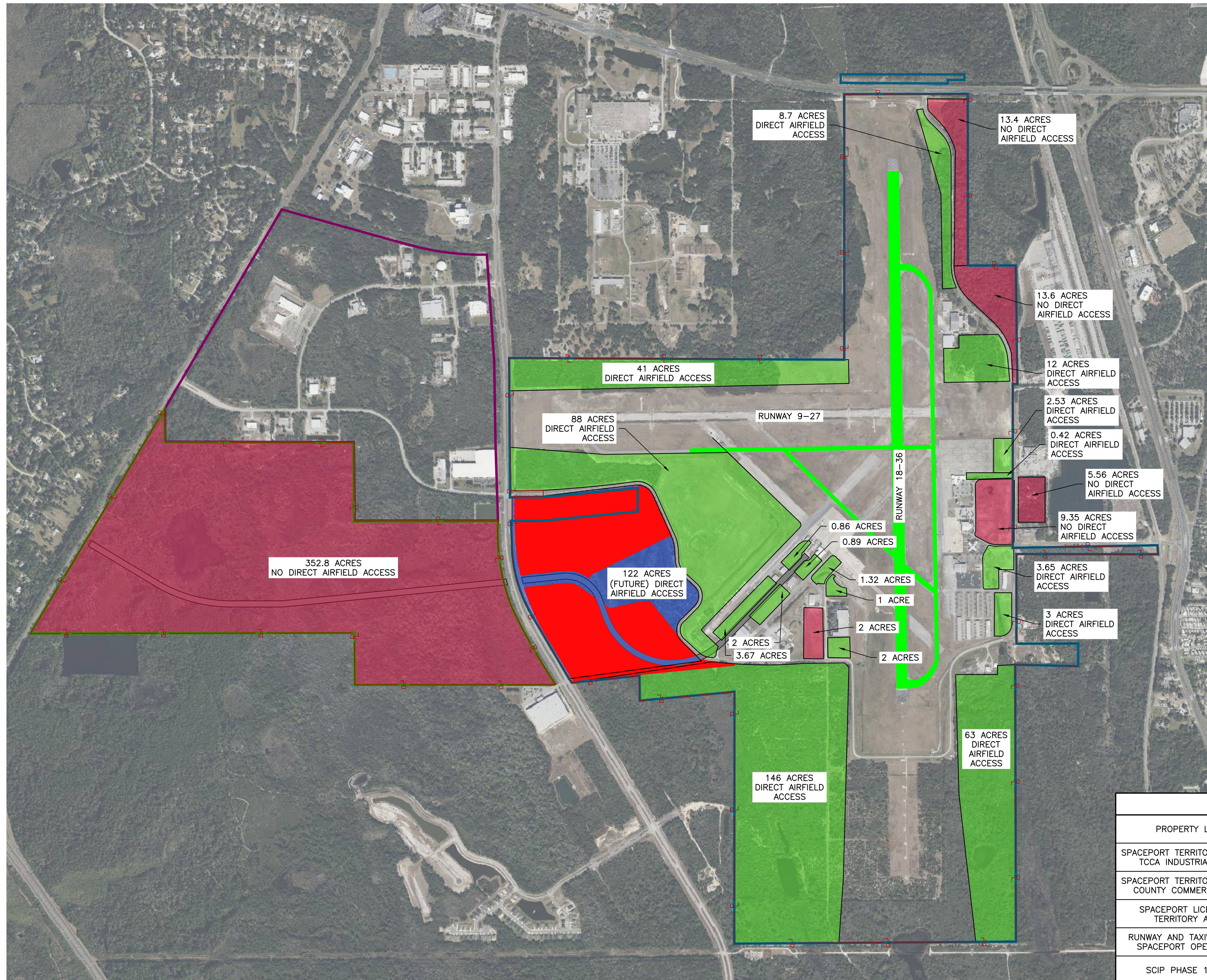
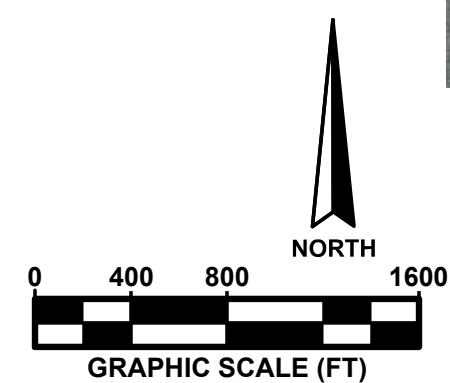


XREFS: x2204509_Base xTYCCOn_ib
 C:\Users\mfract\Documents\Random Projects\TX_Lease.dwg 9/21/2023 3:59 PM



LEGEND	
PROPERTY LINE	
SPACEPORT TERRITORY AREA - TCCA INDUSTRIAL PARK	
SPACEPORT TERRITORY AREA - COUNTY COMMERCE PARK	
SPACEPORT LICENSE / TERRITORY AREA	
RUNWAY AND TAXIWAYS FOR SPACEPORT OPERATIONS	
SCIP PHASE 1 + 2	
NO DIRECT AIRFIELD ACCESS	
DIRECT AIRFIELD ACCESS	
FUTURE DIRECT AIRFIELD ACCESS	

CLIENT LOGO



AVCON, INC.
 ENGINEERS & PLANNERS
 5555 E. MICHIGAN ST., SUITE 200 - ORLANDO, FL 32822-2779
 OFFICE: (407) 599-1122 - FAX: (407) 599-1133
 CORPORATE CERTIFICATE OF AUTHORIZATION NUMBER: 9057
 www.avconinc.com

This item has been digitally signed and sealed by:

Printed copies of this document are not considered signed and sealed and the signature must be verified on any electronic copies.
PROFESSIONAL SEAL

LEASE EXHIBIT

SPACE COAST REGIONAL AIRPORT

LEASE EXHIBIT

ATTENTION:
 THIS DOCUMENT CONTAINS PRIVILEGED AND PROPRIETARY INFORMATION, ALL OF WHICH IS EXPRESSLY PROVIDED BY AVCON, INC. FOR USE BY THE INTENDED RECIPIENT, AND FOR A SPECIFIC PURPOSE. WITHOUT THE EXPRESS WRITTEN CONSENT OF AVCON, INC. ANY DISTRIBUTION, REPRODUCTION, OR OTHER USE OF THIS DOCUMENT, IN WHOLE OR IN PART, IS STRICTLY PROHIBITED.

SCALE (US SVY FT): GRAPHIC

REVISIONS:			
NO.	DATE	BY	DESCRIPTION

DESIGNED BY:
DRAWN BY: M.T.
CHECKED BY: R.H.
APPROVED BY: R.H.
DATE: SEPTEMBER 21, 2023
FDOT FM NO.: XXXXXX-1
FAA AIP NO.: 3-12-00XX-XXX-XXXX
AVCON PROJECT NO.: YYYY.CCC.NN
CADD: TIX_LEASE

DRAWING

100% DESIGN SUBMITTAL